

# *RCS 3.0*

Version E/6000/04-2008

Firmware X.17



## Index

### 1 General

### 2 Installation

Types of installation .....	4
The software installation .....	4

### 3 Running the Software

Running the Datalogging for the very first time .....	9
Organization of the files .....	9
Accessing the data from the Datalogger .....	10
Accessing the data from the Explorer .....	11
Printing .....	13

## 1 General

RCS 3.0 is a Programm for Data-Logging of RUMED-Cabinets.

## 2 Installation

### Types of installation

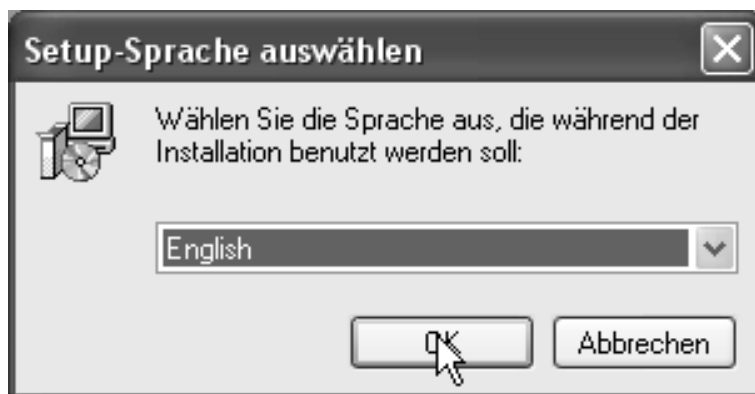
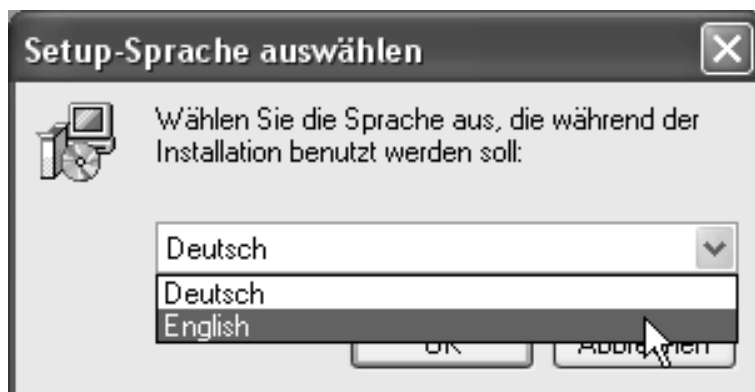
All Units should be connected with the correct cables before installation. On the PC where the Cabinets are connected to you have to install the complete Software (including the Datalogging module).

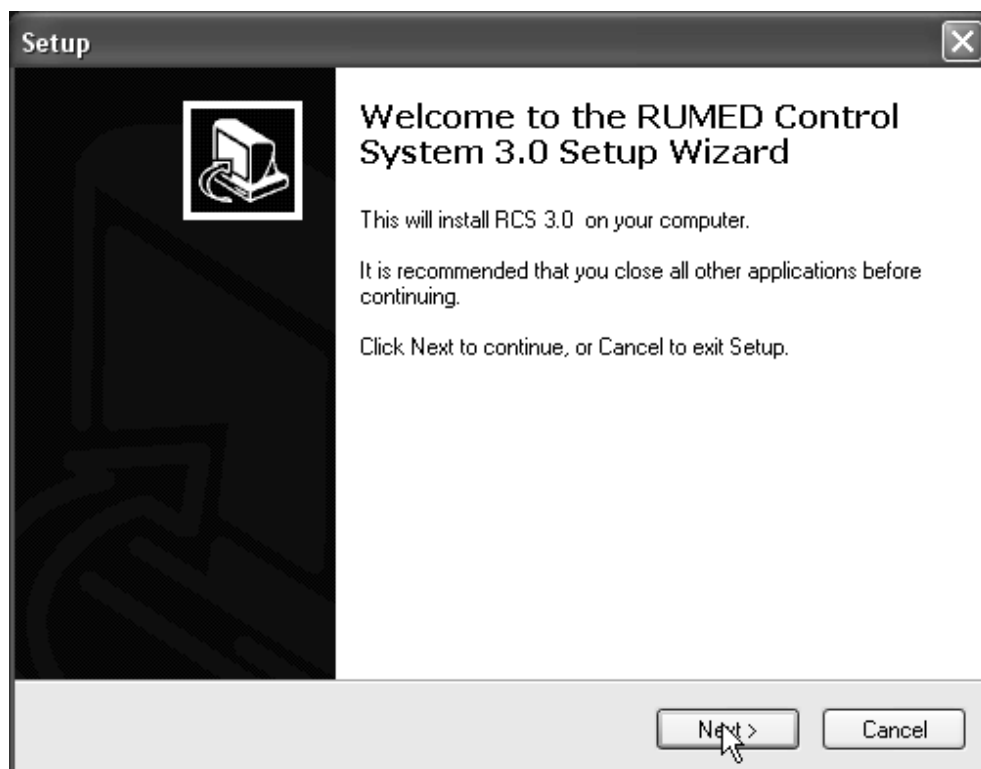
***On other workstations you have to use the Standardinstallation without the datalogging module!***

### The software installation

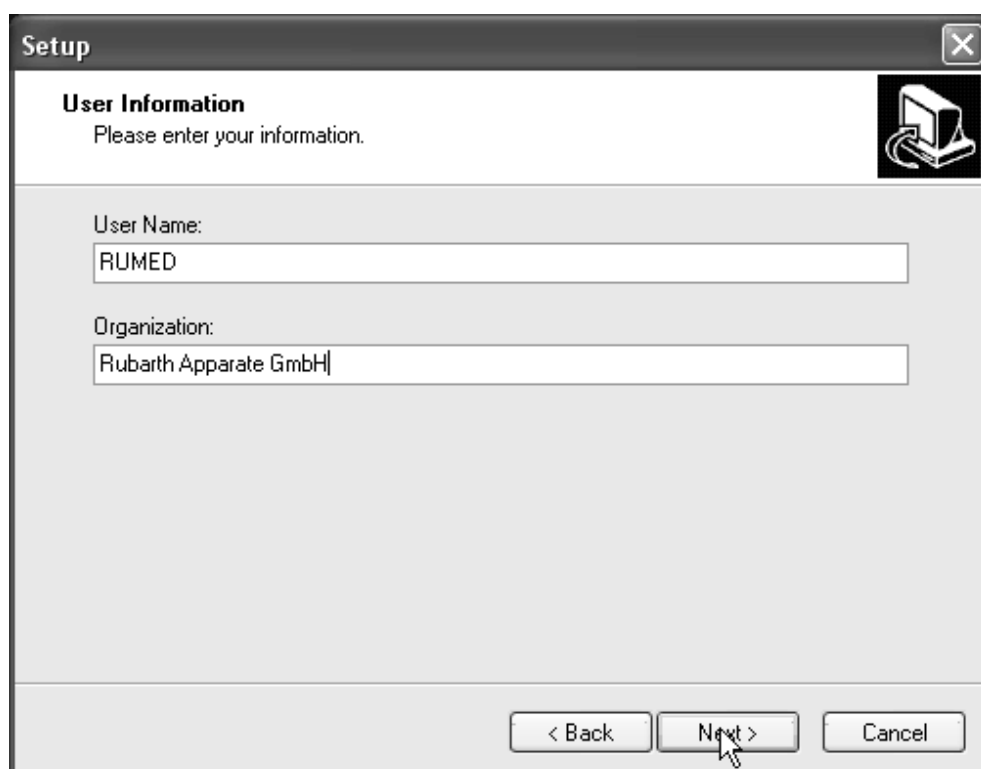
Insert the CD in your CD-Drive and open the root directory. Run the Setup.

Select the language for installation

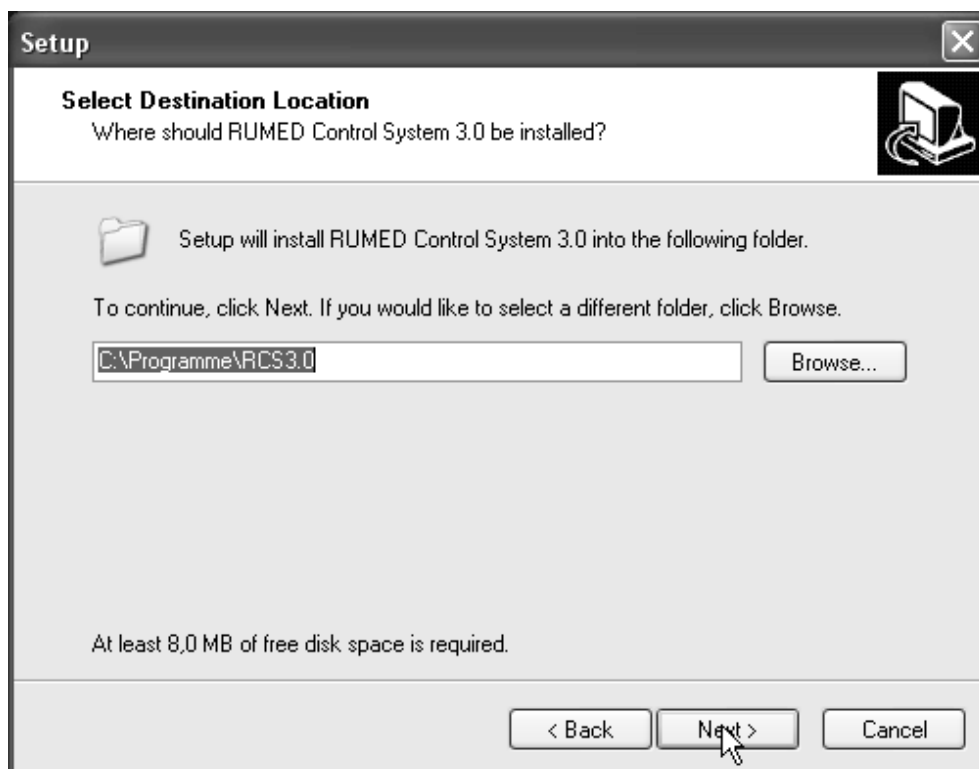




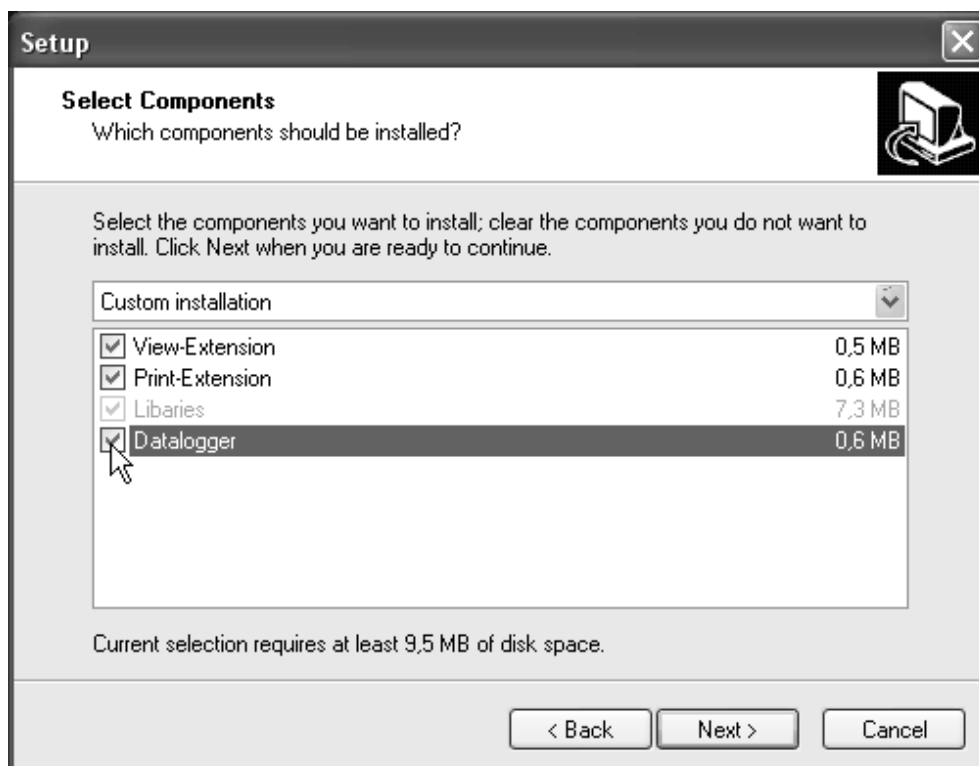
Press Next to continue with the installation or Cancel to exit the Setup.



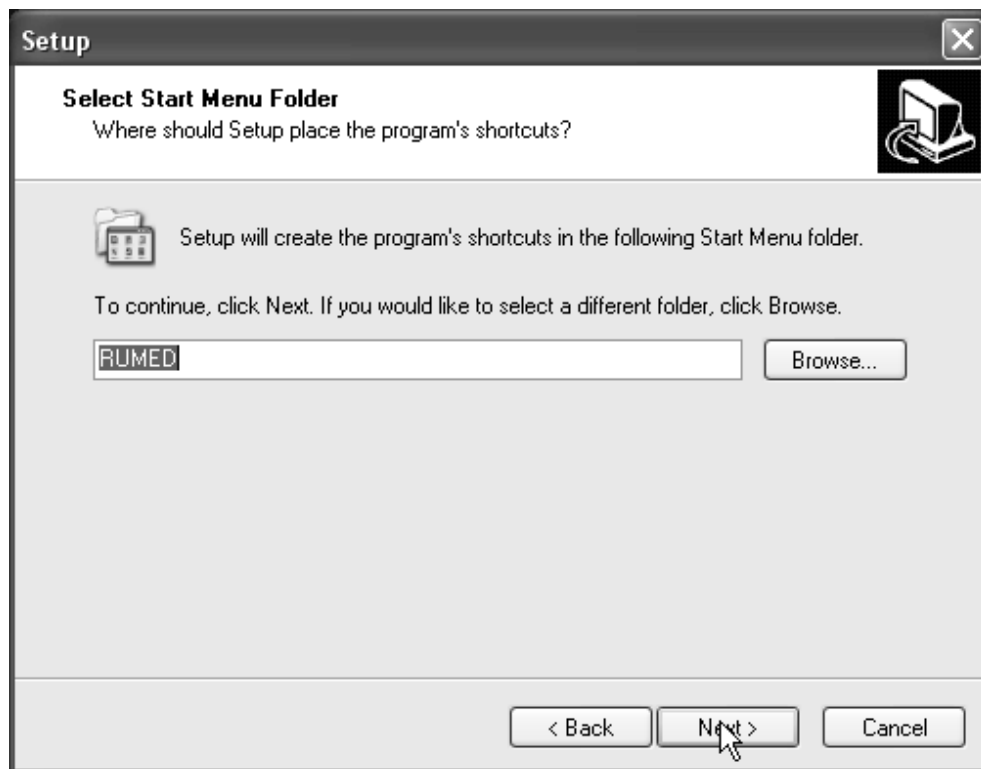
Enter the requested information and press „Next“ to continue.



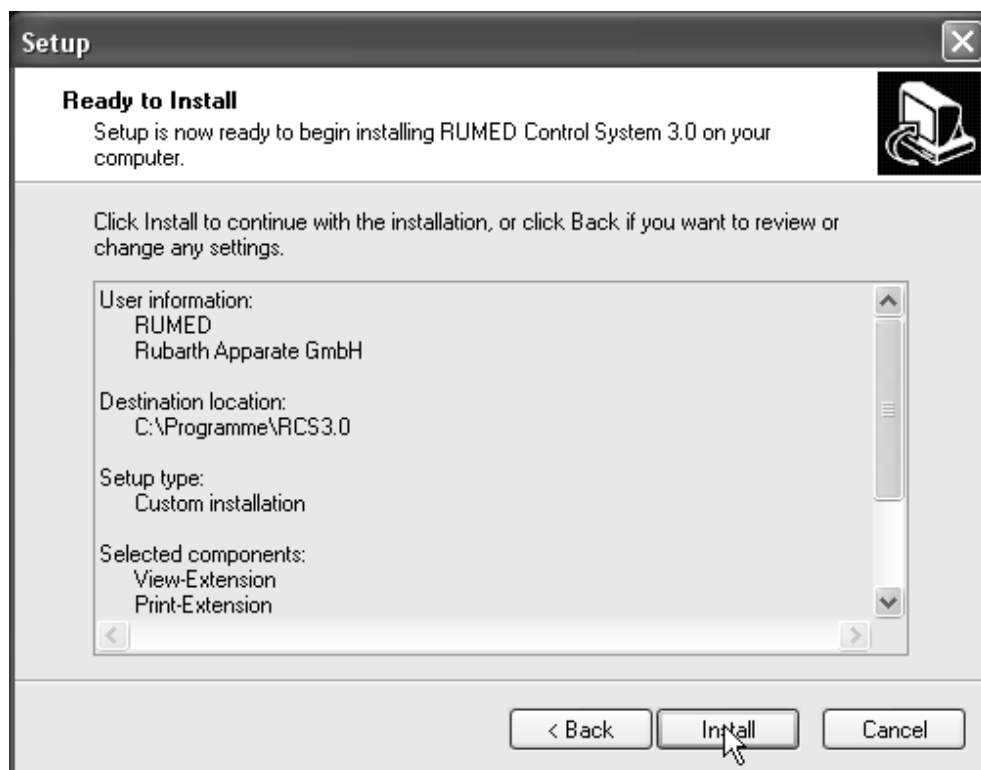
Select the drive and folder for the installation of the software. It might be a good idea to choose a different partition with some 100MB free space because you will need space for the continuous datalogging.



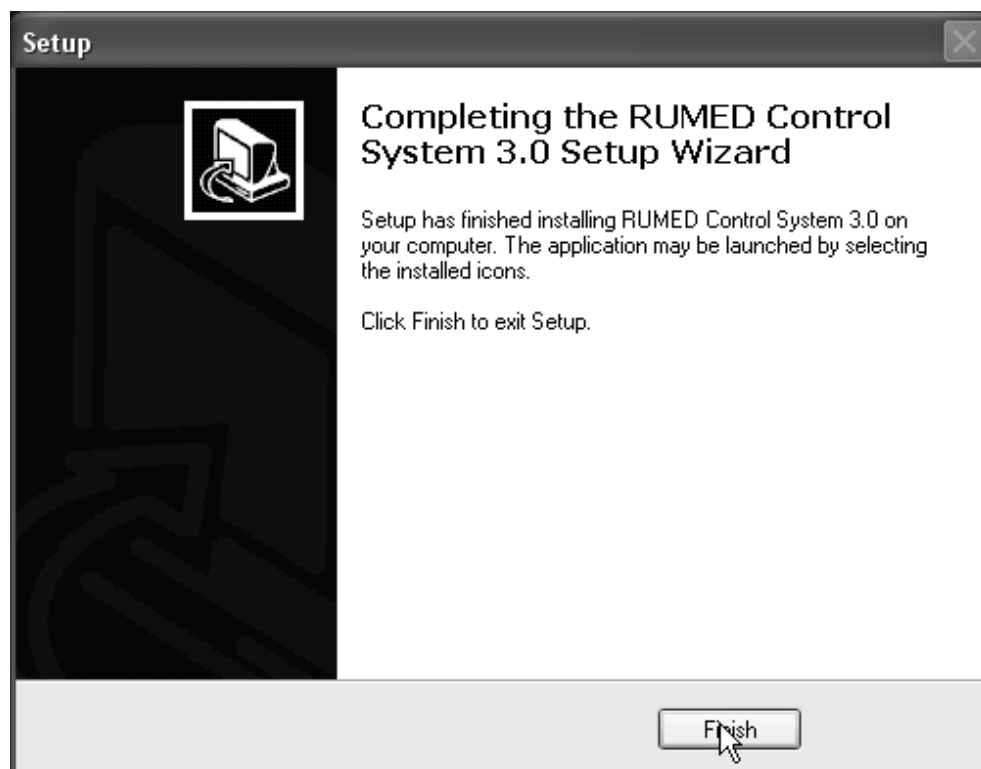
If you install the data-logging workstation you have either to select the Datalogger or just select the „Complete Installation“. **If you install another workstation do not select the Datalogger!**



Edit the „Start Menu Folder“ if you want to modify it and click „Next“ to continue.



Press „Install“ to complete the software installation.



Press „Finish“.



### 3 Running the Software

#### Running the Datalogging for the very first time

On Installation a shortcut for starting the data-logging is written into the autostart folder. The Datalogging Programm must run all day long because otherwise you will have no continuous Datalogging.

If all Cabinets are running and connected to the datalogging workstation you can start the Datalogging by launching the „RCS 3.0“ manually from „Start“ -> „RUMED“ -> „RCS 3.0“

Data of all cabinets should be displayed.



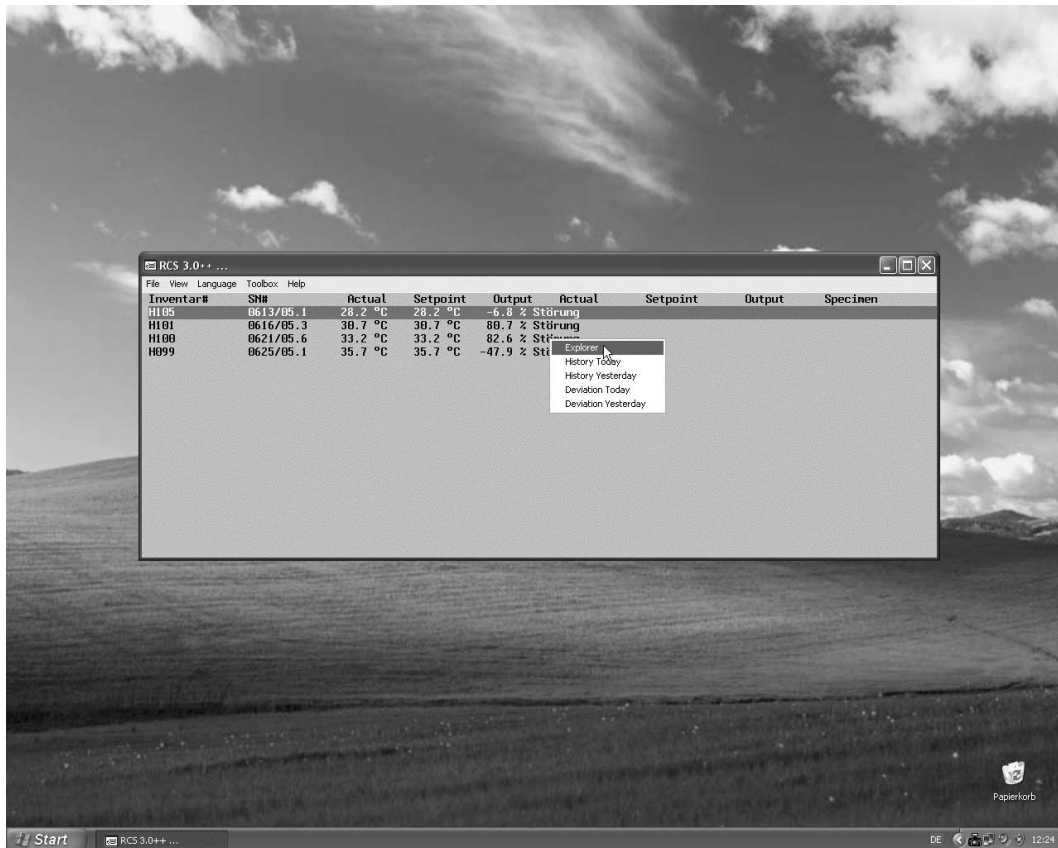
#### Organization of the files

The Programm does not work with a single big data file. For each Cabinet and Day the Programm writes a single file. The Extension of this file is „.RC3“. The Name of the file is generated from the Serial Number and the date of the day..

Example: 060913\_20070315.RC3 for Cabinet SN# 0609/13 from 15.03.2007

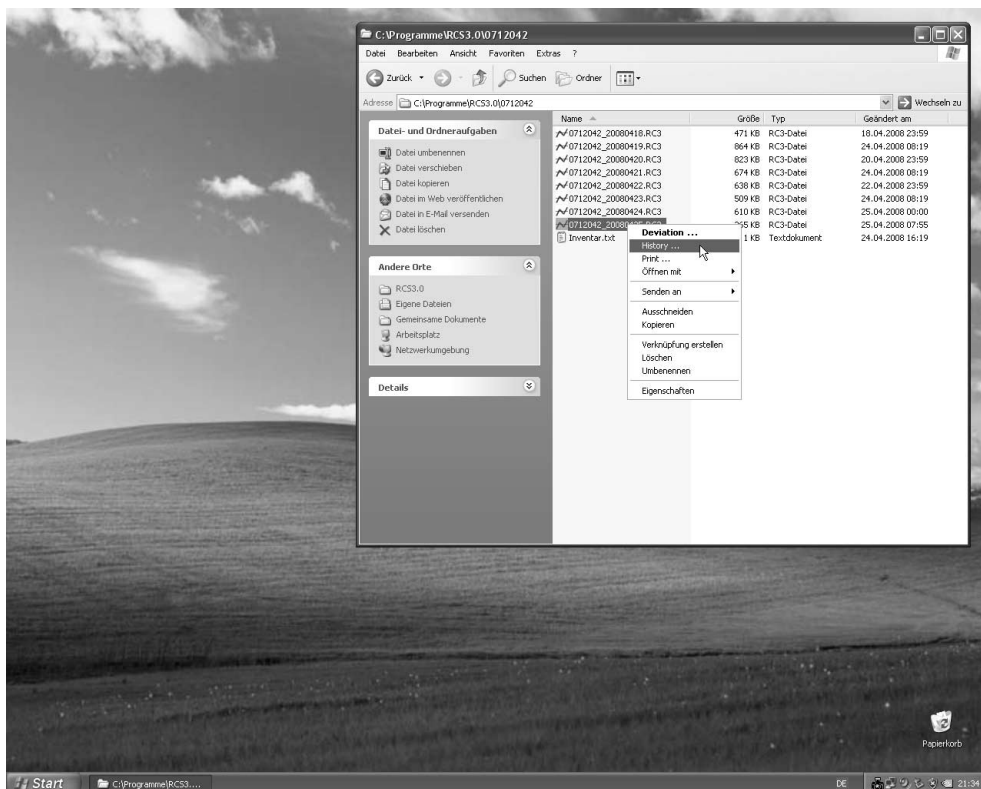
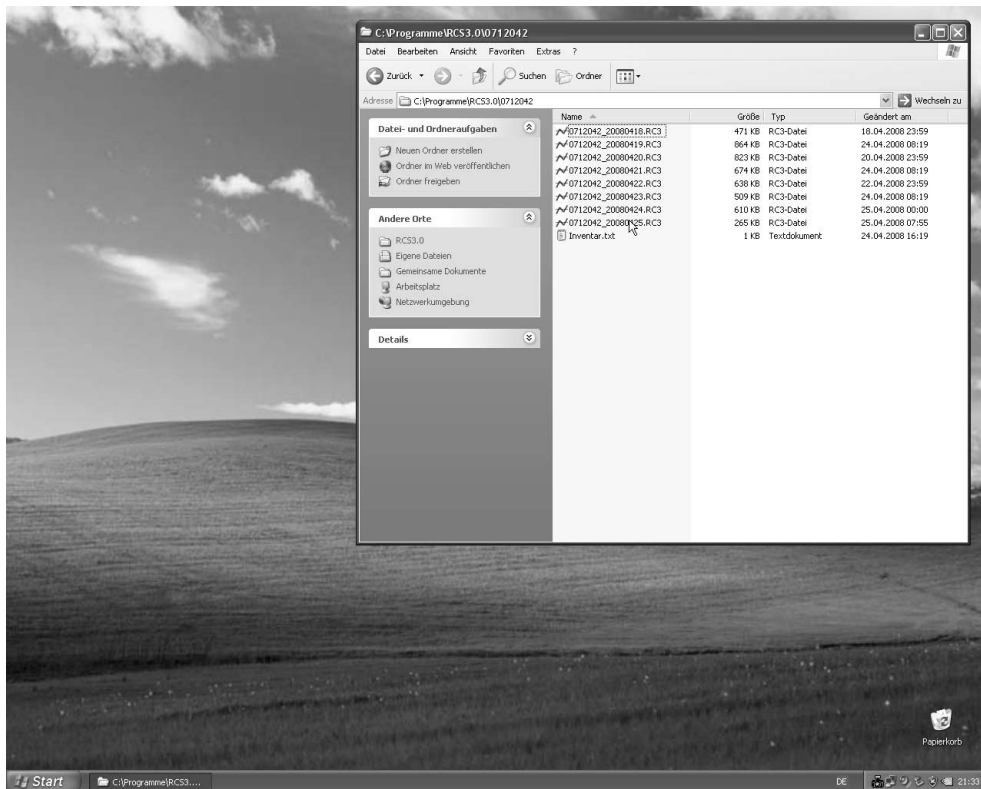
## Accessing the data from the Datalogger

From the Dataloggingmodul you can easily access the data directory of each cabinet by pressing the right mouse button and selecting „Explorer“. There you will find also direct access to „History“ and „Deviation“ of „today“ and „yesterday“. On other workstations you should create shortcuts to the datadirectories.

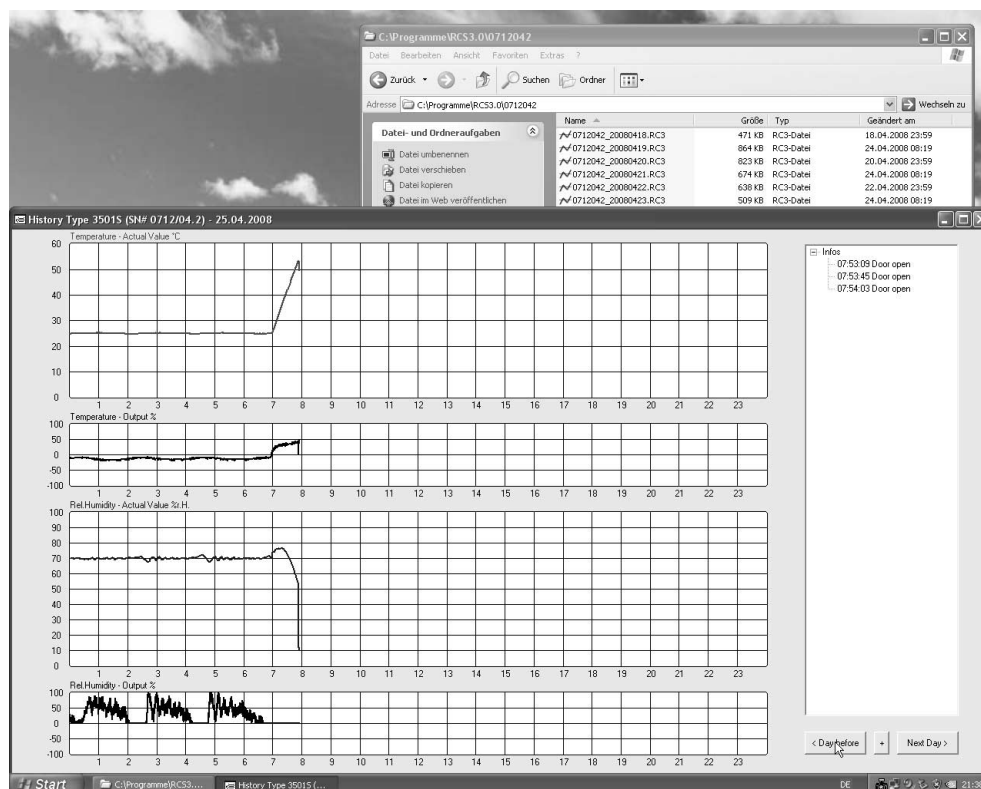


## Accessing the data from the Explorer

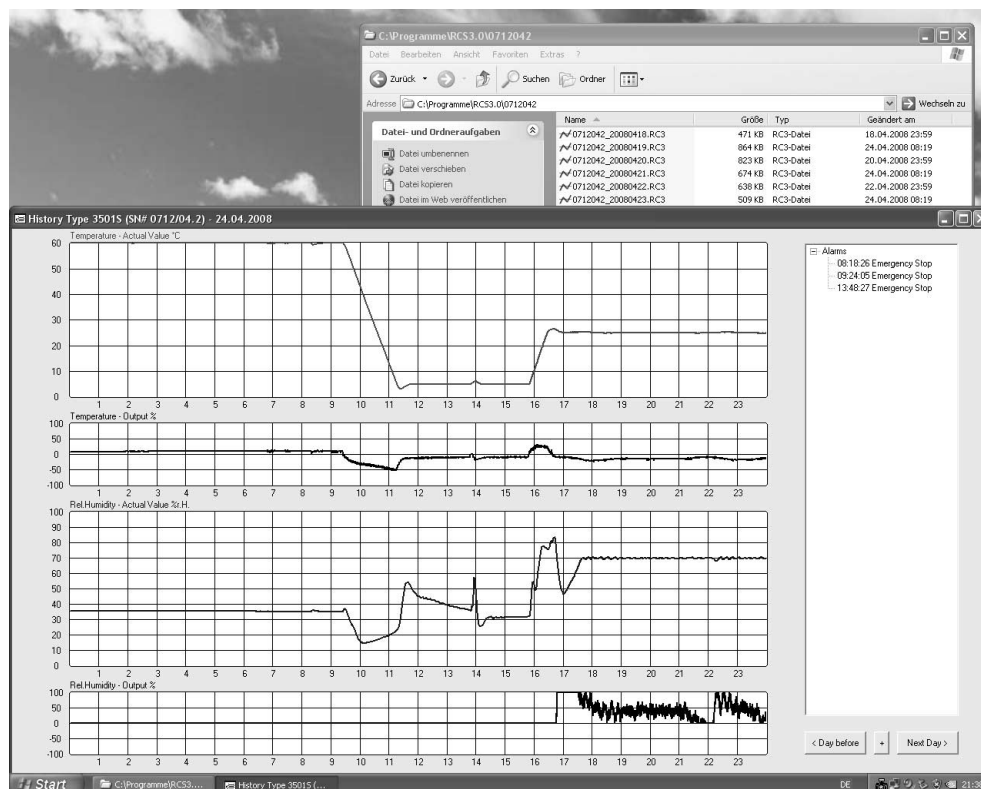
You can access the files directly with the explorer. The functions „History“, „Deviation“ und „Print“ may be accessed by pressing the right mouse button for getting the „Contextmenu“ for the selected file.



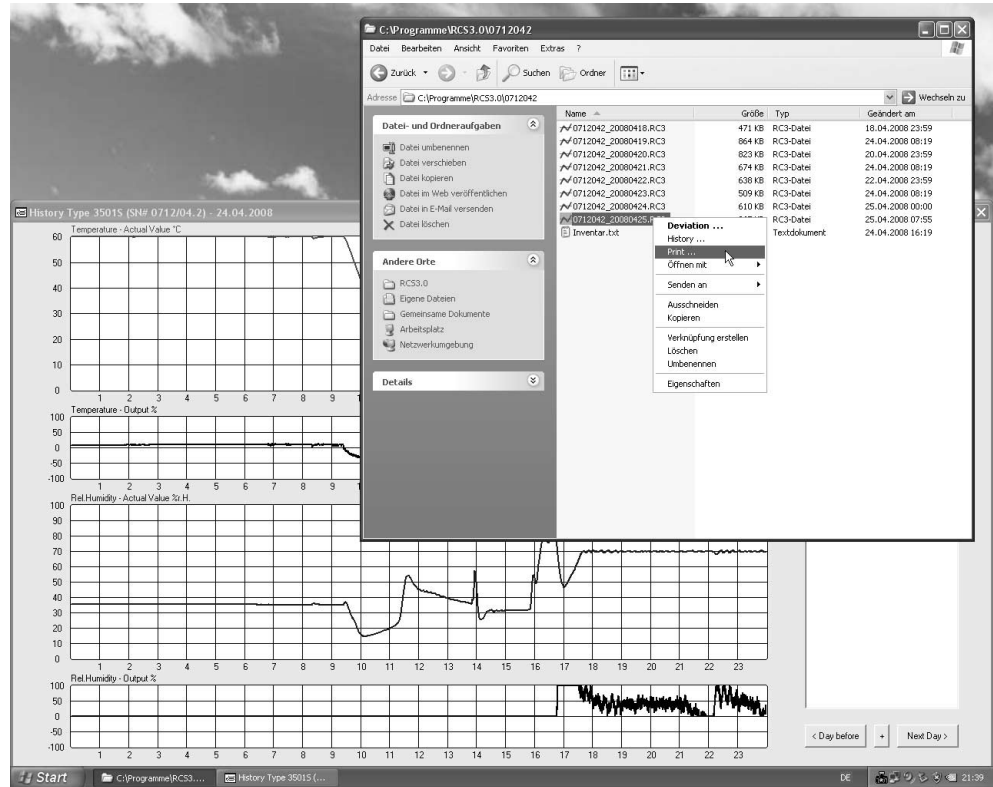
A viewer for the selected datafile is launched.



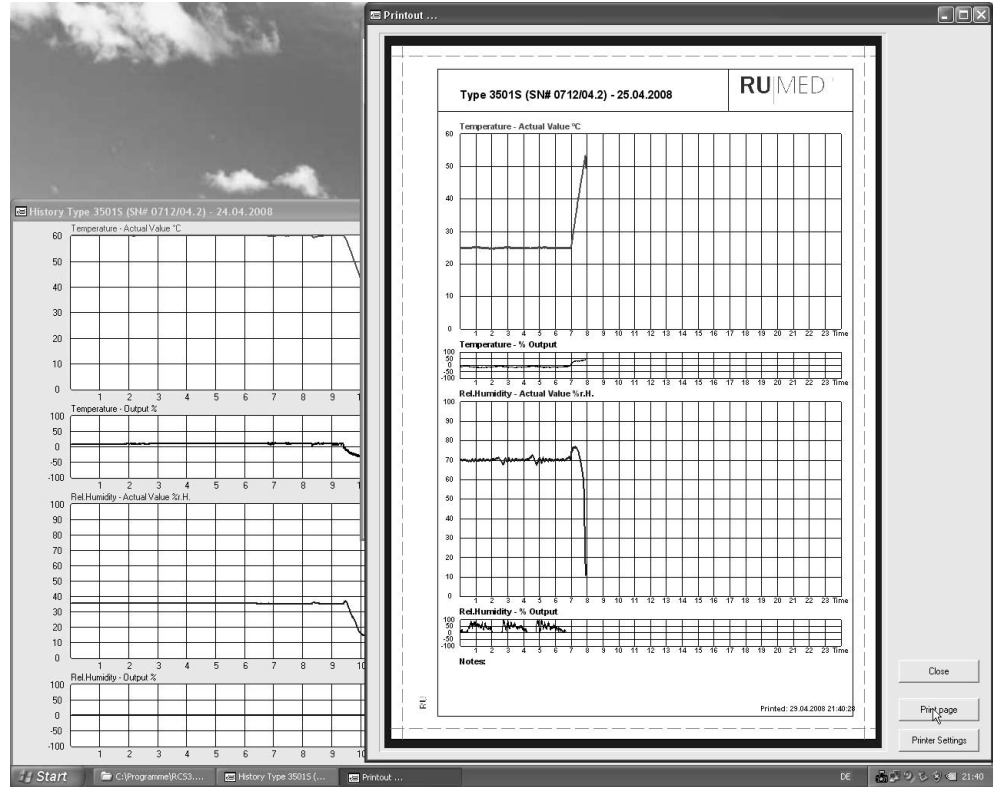
Once you have opened the viewer you can „walk“ through the datafiles of continuous time periods by pressing the button „Next Day“ or „Previous Day“. Other time periods have to be accessed direct from the explorer..



## Printing



Press „Close“ to abort, press „Print Page“ to get a Printout of the selected Cabinet and day on your printer or modify the „Printer Settings“ first.







**Rubarth**  
Apparate GmbH

Mergenthalerstraße 8  
D-30880 Laatzen  
Germany

Telefon 0511. 866 599 .80  
Fax 0511. 866 599. 99  
e-mail [info@rumed.de](mailto:info@rumed.de)

Prüf- und Simulationsgeräte  
für Forschung, Qualitätskontrolle  
und Produktion